

Presents

amrapali dhir



...because time matters



SPECIFICATIONS

- Structure: RCC-framed structure with anti-termite treatment in foundation
- Roof Heat Treatment: Heat Treatment of roof for Thermal Insulation with specially approved Thermal Insulation material
- Elevation: Modern elevation, conforming to contemporary designs
- External Finish: Paint by certified Nerolac / Asian Paints / Berger applicator*, and other effects as applicable
- Lobby: Beautifully decorated & painted lobby
- Doors & Hardware: Quality wooden frames with solid core flush doors. Door handles of Godrej / reputed make*. Main door with premium stainless steel handle. Main Door Lock by Godrej / reputed brand*
- Internal finish: High Quality Putty for a good finish
- Windows: Colour anodized / Powder coated aluminium sliding windows with clear glass
- Flooring: Vitrified tiles in bedrooms / living / dining / kitchen.
Premium Ceramic tiles in toilets
- Kitchen counter: Granite slab with stainless steel sink. Wall tiles up to 2 (two) feet height above counter
- Toilets: Hot and Cold water line provision with CPVC* pipes. Quality single lever CP & sanitary fittings from Parryware / Hindware / Jaguar / *Dado of ceramic tiles up to door height.
- Elevator: Automatic passenger Lifts
- Electricals:

a) Concealed ISI approved copper wiring with modular switches
of Philips / Anchor Roma / Schneider Electric*

b) Adequate electric points throughout all rooms

c) One AC point in all bedrooms and living / dining area.

g) Modern MCBs and Changeovers of Havells / HPL / Schneider Electric*
- Water Supply: Underground and Overhead storage tanks of suitable capacity
- Landscape: Aesthetically designed and executed landscaping
- Generator: 24hr power back-up for all common services.
- Security: Intercom facility and CCTV
- * The specified brands only indicate the level of quality we will provide. In case of unavailability of materials / brands or other circumstances, the developer may use different brands / products

Located in Kalikapur, a quiet and highly accessible pocket, only metres away from the EM bypass and Prince Anwar Shah connector junction, Amrapali Dhir is a resident’s delight. With mega residential complexes like Avishikta, local bazaars, Spencers mall and a host of restaurants just a few steps away, Kalikapur is an ideal homely neighbourhood. Amrapali Dhir offers 3BHK flats, completely open on all 3 sides, at the most affordable rates in the city.

amrapali dhir



Salient Features:

- Number of Blocks 2
- Number of Floors G + IV
- Number of Flats 24 flats
- Unit Sizes 1082 sft. to 1348 sft. (3BHK)

Amenities & Facilities

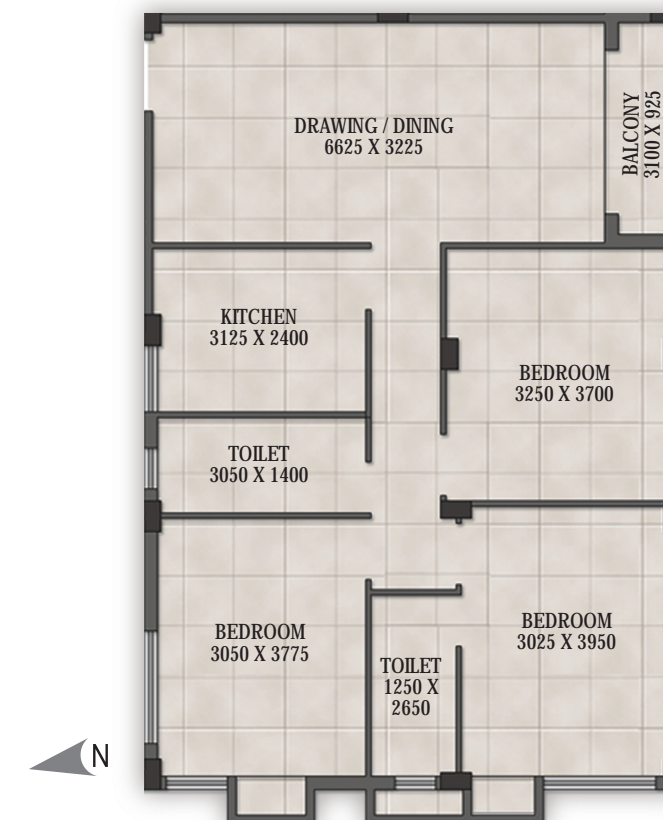
- Gymnasium
- Community / Party Area
- Power back-up
- Aesthetically designed and landscaped Terrace with sitting and recreational areas



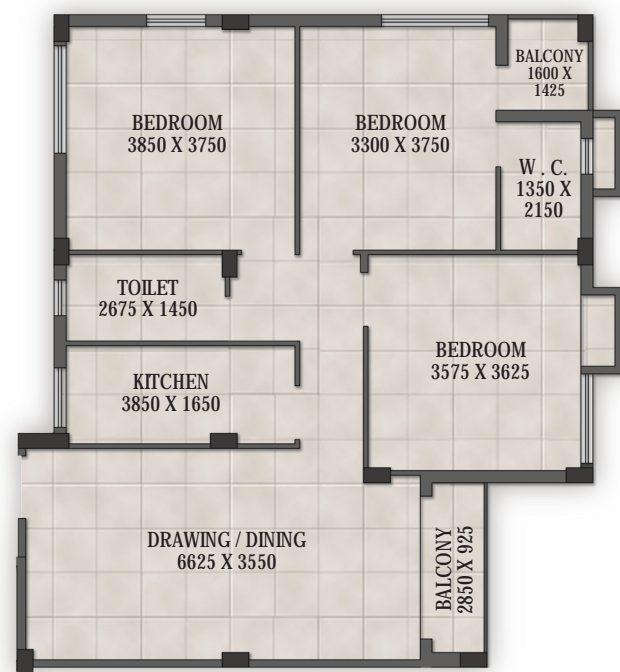
Flat C - 3BHK - 1431 sft.



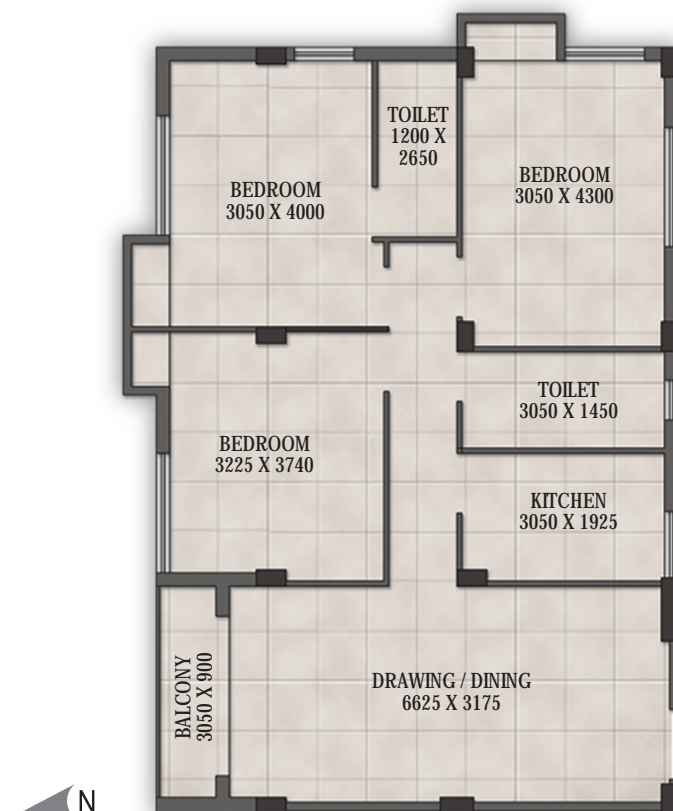
Flat D - 3BHK - 1325 sft.



Flat A - 3BHK - 1432 sft.



Flat B - 3BHK - 1348 sft.



Flat E - 2BHK - 904 sft.

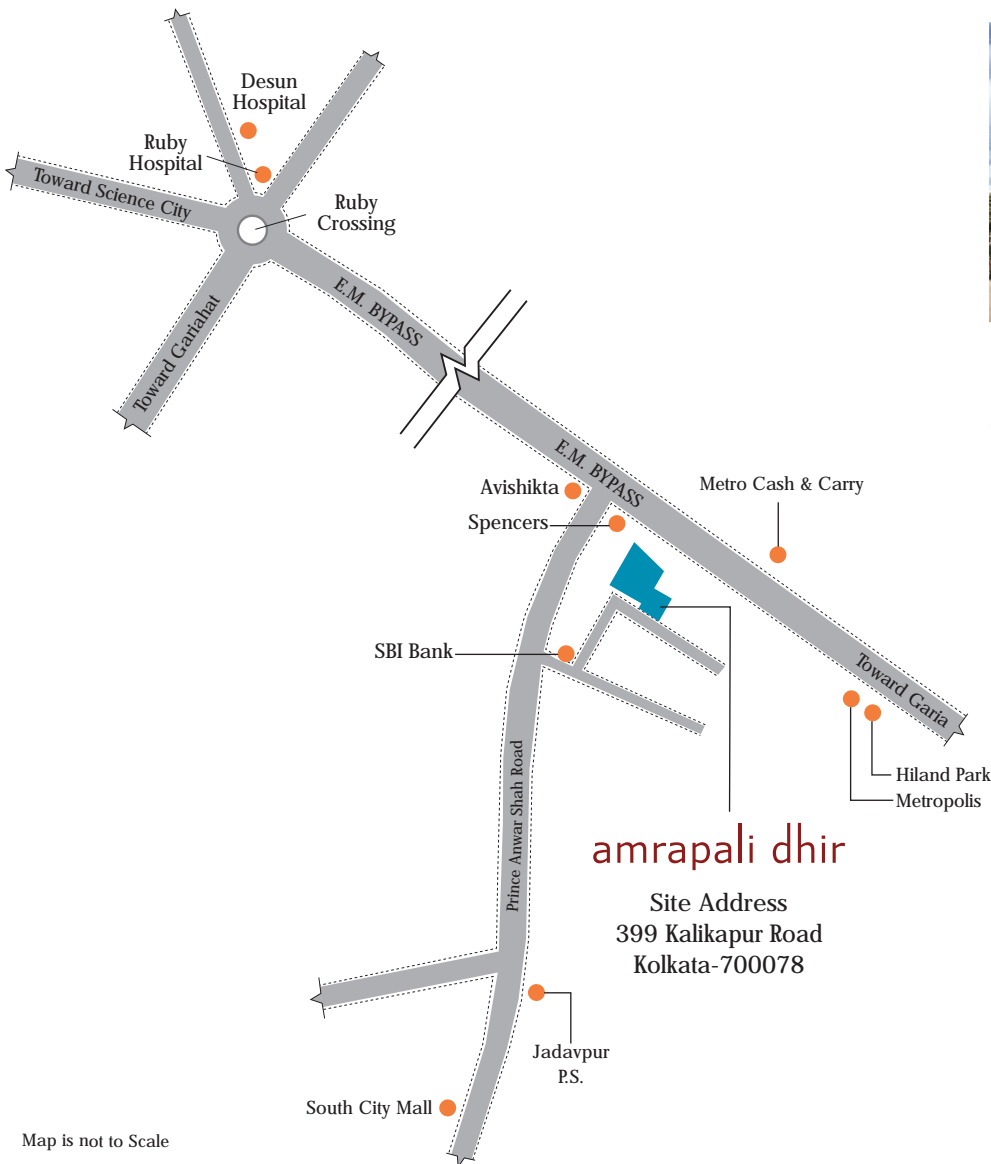


Flat F - 3BHK - 1082 sft.



KEY DISTANCES

- Ruby Hospital – 1 km
- South City Mall – 3 kms
- EM Bypass – 250 metres
- Spencers – 150 metres
- State Bank of India – 40 metres



A few past projects



Capricorn Amrapali
Puddopukur Road



Capricorn Gangotri
Lake Road



Capricorn Castle
Jodhpur Park



Capricorn Nandalaya
New Road

With a history of delivering over 75 projects successfully and still counting, Capricorn Group is regarded as one of the leading developers of Eastern India. The group has always focussed on quality and set benchmarks for the others to follow.

amrapali dhir

Site Address
399 Kalikapur Road
Kolkata-700078

Developer



Corporate Office:

73, Manick Bandopadhyay Sarani 1st Floor,
Kolkata-700040 **T:** +91 33 24818060 / 96818 53255
E: info@capricorng.com **W:** www.capricorng.com

Architect

Debranjana Chanda

Structural Engineer
Koushik Sengupta